

METRO

Monthly Board Report

Operating • Capital • Service • Performance

February 2009

February 2009 MONTHLY BOARD REPORT

Table of Contents

Section A	Operating Budget February 2009 / budget vs. actual FY2009 YTD / budget vs. actual
Section B	Ridership Comparison Ridership Trends <ol style="list-style-type: none">1. Local Bus2. Park & Ride Bus3. METRORail4. METROLift5. Star Vanpool6. HOV Car & Van Pools & Non-METRO Buses7. Ridership by Service Category
Section C	Sales Tax & Fare Revenues
Section D	Operating Ratio Statistics
Section E	Service Performance Statistics
Section F	Capital Budget
Section G	General Mobility Budget
Section H	Debt Service

A. OPERATING BUDGET

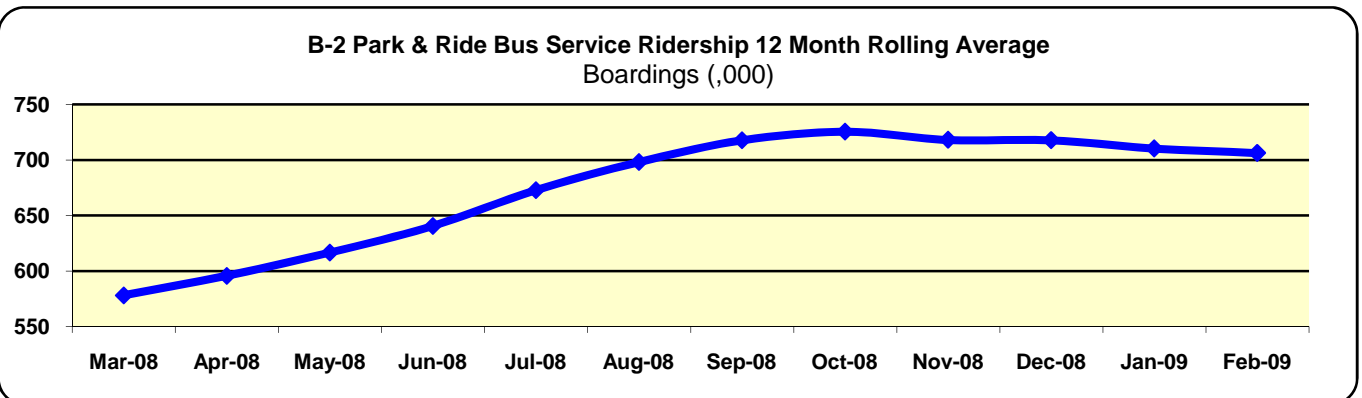
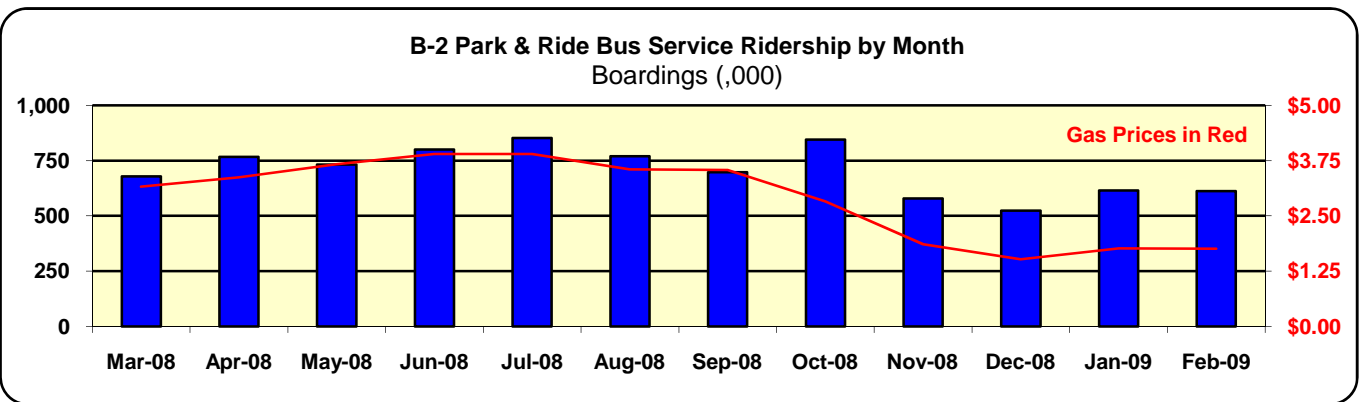
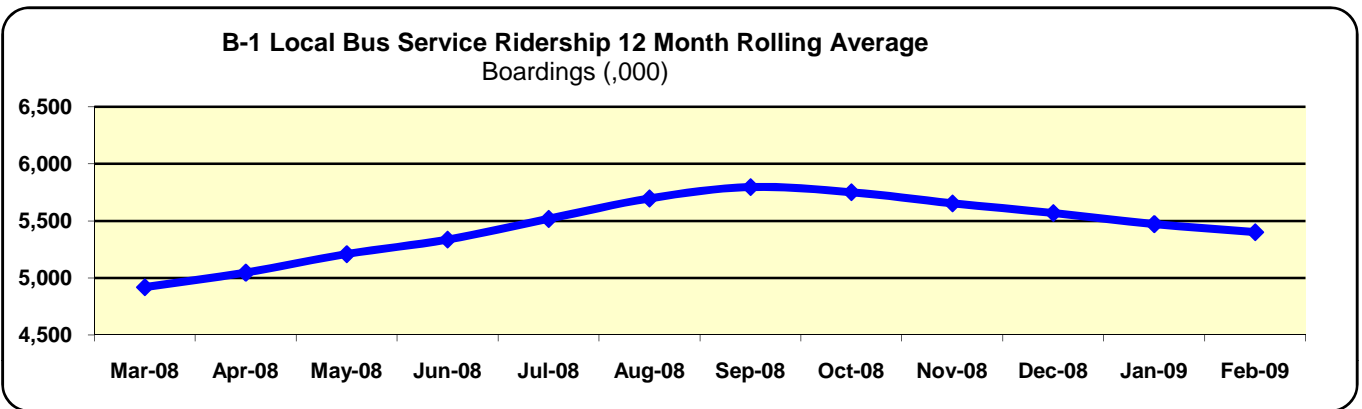
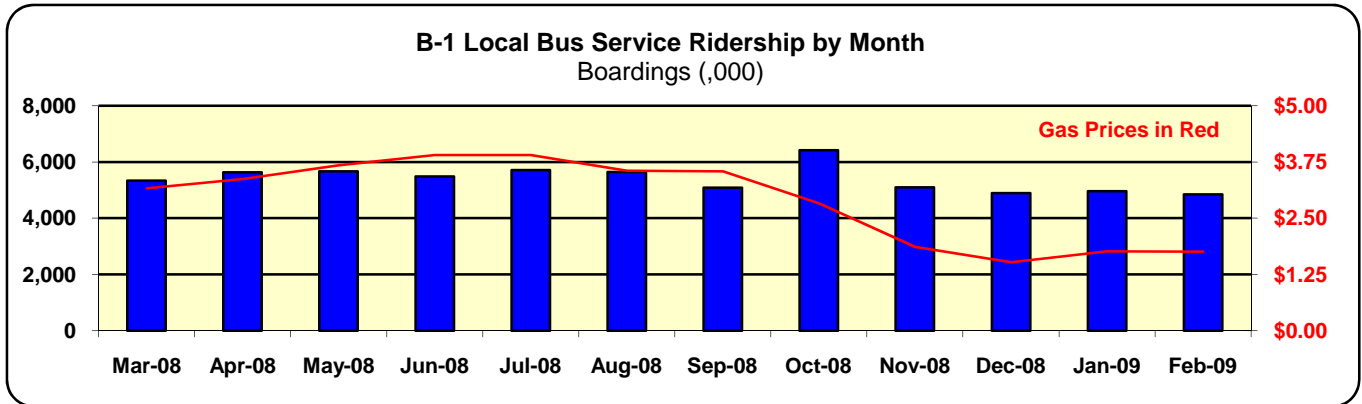
A-1. Comparison of Budget to Actual for the Month (February 2009)

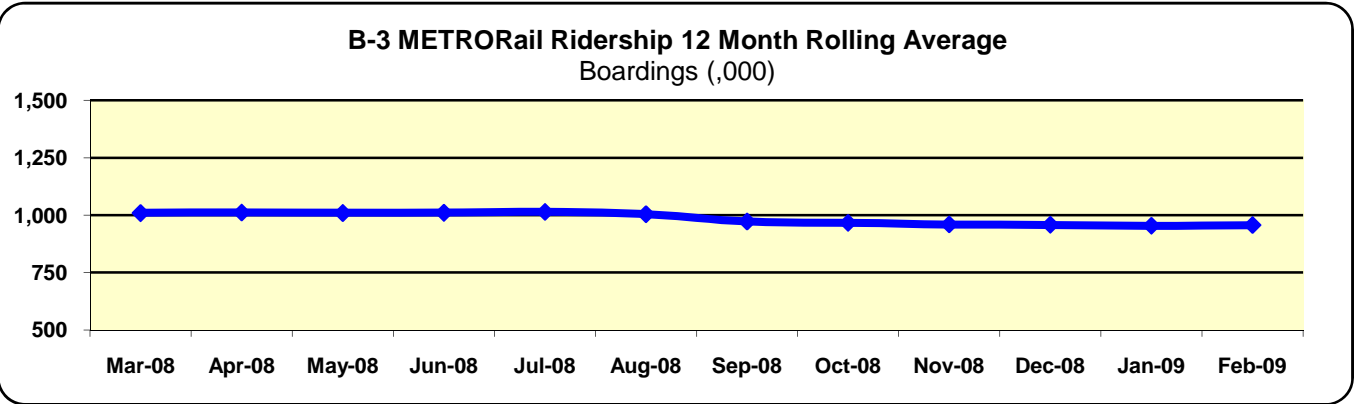
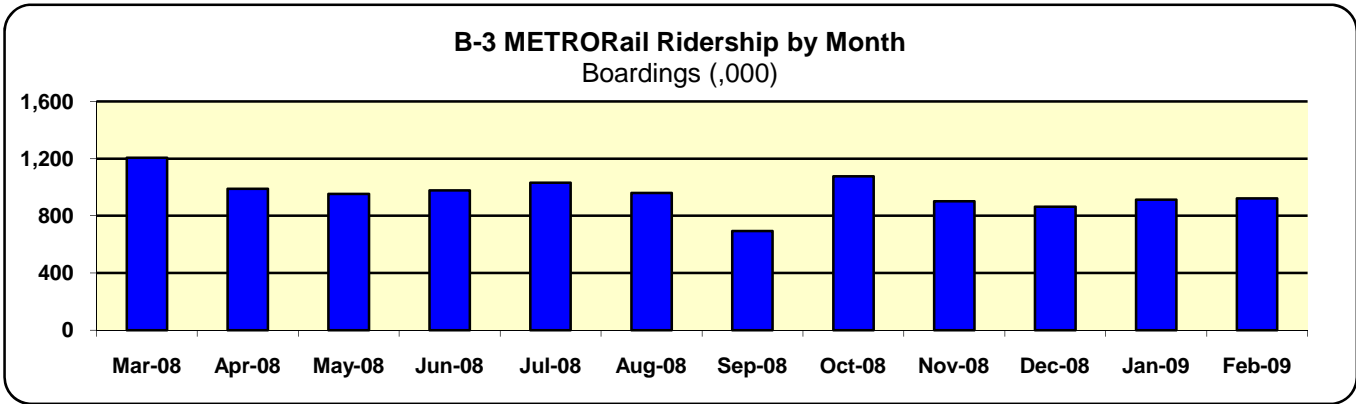
	FY2009 February Budget	FY2009 February Actual	\$ Variance (favorable)/unfavorable	Variance %
Labor & Fringe Benefits	19,116,505	18,429,498	(687,007)	-3.59%
Materials and Services	13,646,984	13,040,555	(606,429)	-4.44%
Total Operating Expenses	32,763,489	31,470,053	(1,293,436)	-3.95%
Reimbursements	(8,473,235)	(8,604,523)	(131,288)	-1.55%
Operating Budget	24,290,254	22,865,530	(1,424,724)	-5.87%

A-2. Comparison of Budget to Actual Year-to-Date (5 Months)

	FY2009 Year-to-date Budget	FY2009 Year-to-date Actual	\$ Variance (favorable)/unfavorable	Variance %
Labor & Fringe Benefits	102,425,112	98,138,960	(4,286,152)	-4.18%
Materials and Services	72,526,946	65,899,379	(6,627,567)	-9.14%
Total Operating Expenses	174,952,058	164,038,339	(10,913,719)	-6.24%
Reimbursements	(43,118,600)	(41,040,996)	2,077,604	4.82%
Operating Budget	131,833,458	122,997,343	(8,836,115)	-6.70%

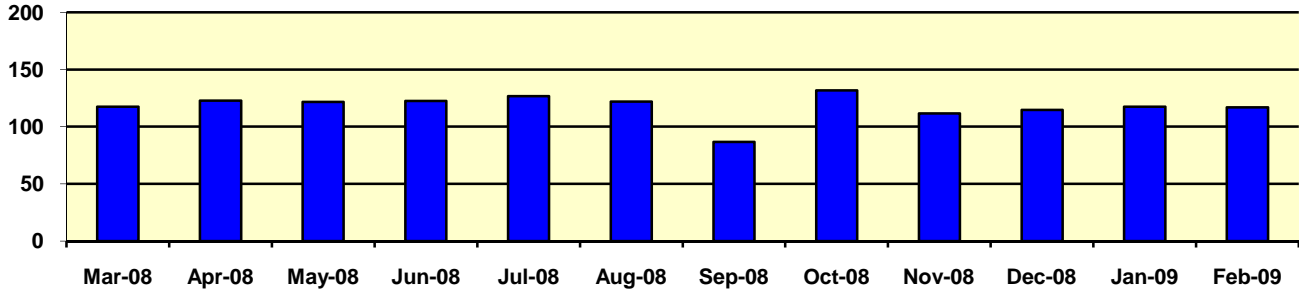
B. RIDERSHIP



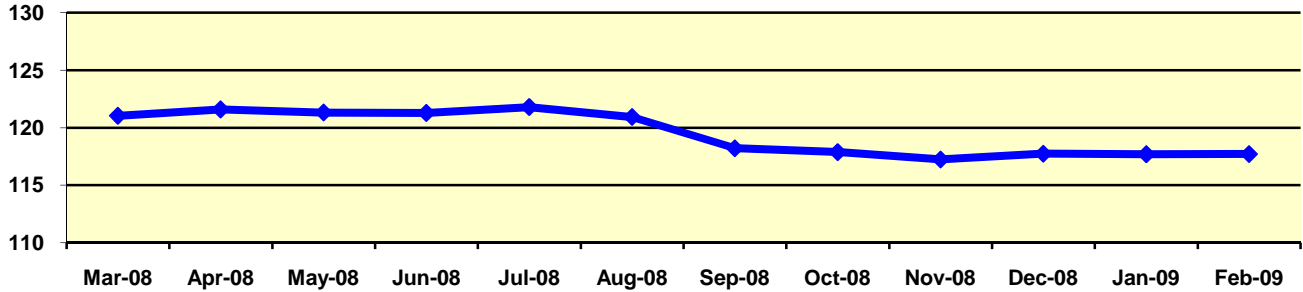


Note: Beginning in July 2008, fixed route ridership data reported are the unadjusted and unedited Automatic Passenger Counter (APC) registrations. Prior to July 2008, APC data was incomplete and have been adjusted to the same basis as the data after July 2008.

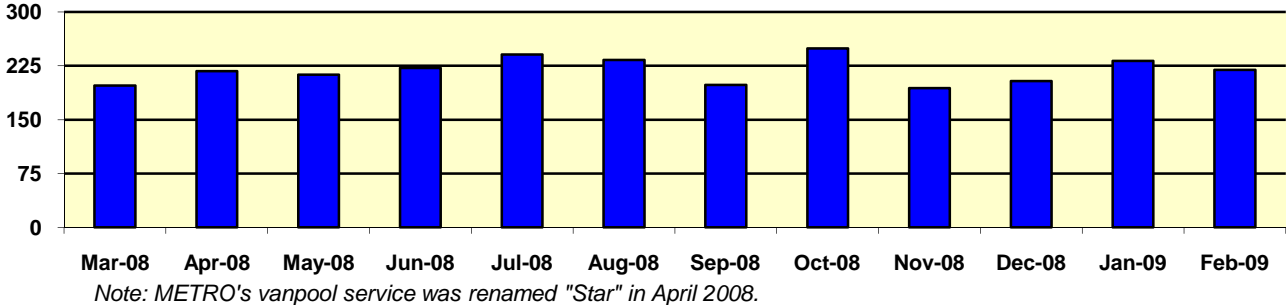
B-4 METROLift Service Ridership by Month
Boardings (,000)



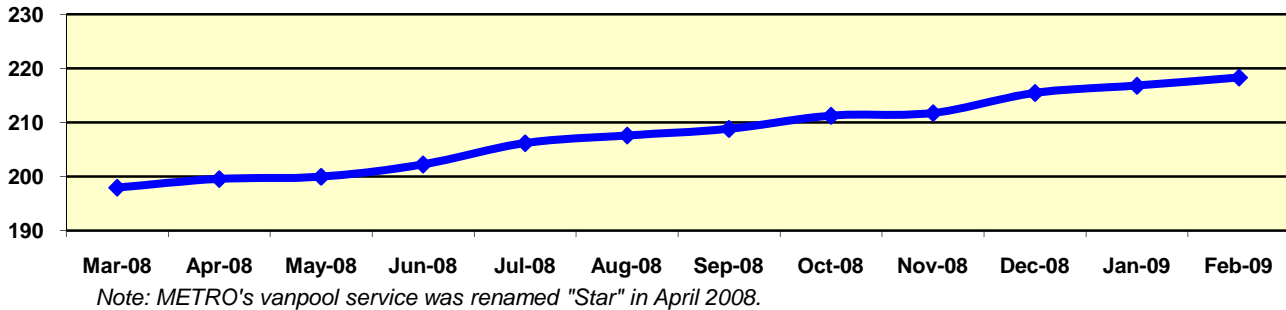
B-4 METROLift Service Ridership 12 Month Rolling Average
Boardings (,000)



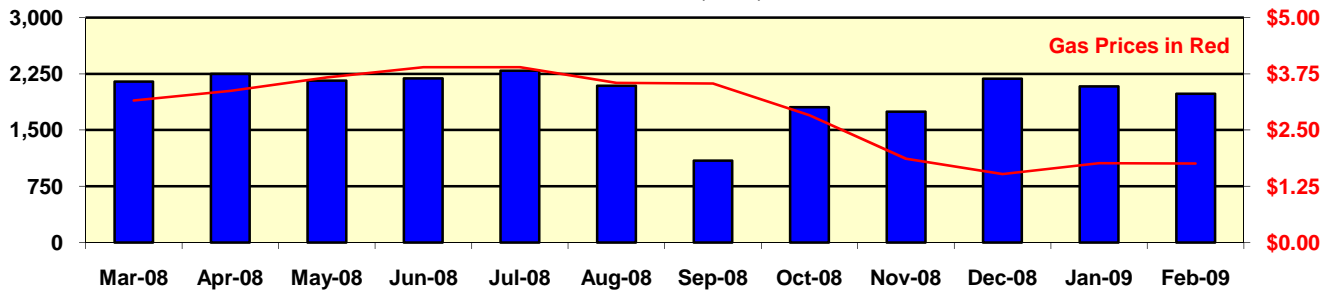
B-5 Star Vanpool Ridership by Month
Boardings (,000)



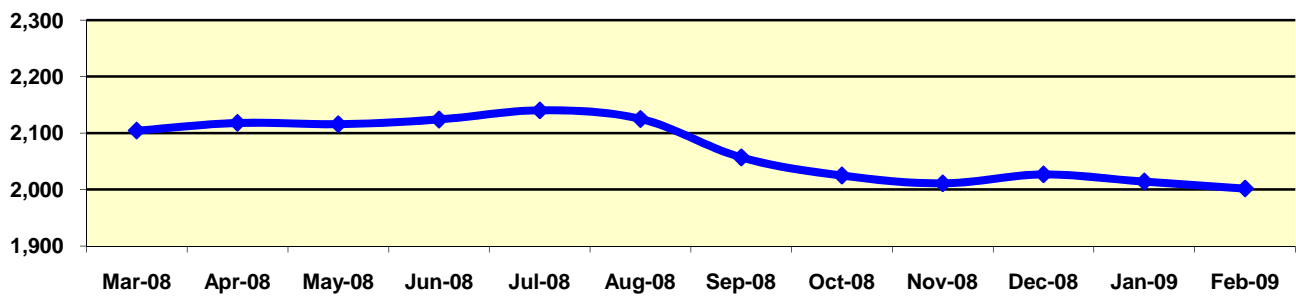
B-5 Star Vanpool Ridership 12 Month Rolling Average
Boardings (,000)



**B-6 HOV, Carpools, Vanpools & Non-METRO Buses Ridership by Month Boardings
(,000)**



**B-6 HOV, Carpools, Vanpools & Non-METRO Buses Ridership 12 Month Rolling
Average - Boardings (,000)**



B-7. Ridership By Service Category

RIDERSHIP DATA			
<i>(Fixed Route Boardings are the unadjusted and unedited APC registrations)</i>			
	FY2009 February-09 Estimated Boardings	FY2008 February-08 Boardings	% Change
Fixed Route Bus Services			
Local	4,848,754	5,711,121	-15.1%
Park & Ride	612,455	660,867	-7.3%
Total Fixed Route Bus Service	5,461,209	6,371,988	-14.3%
METRO Rail	921,936	891,830	3.4%
Total Fixed Route Services*	6,383,145	7,263,818	-12.1%
Special Bus Services			
METROLift	116,986	116,893	0.1%
Star Vanpool	219,288	201,173	9.0%
Special Events and Charter	687	2,438	-71.8%
Total Special Bus Services	336,961	320,504	5.1%
Total Bus and Rail Services	6,720,106	7,584,322	-11.4%
HOV Carpools, Vanpools, and Non-METRO Buses	1,985,260	2,132,227	-6.9%
TOTAL SYSTEM RIDERSHIP	8,705,366	9,716,549	-10.4%

* The fare restructuring and fare increase projected a fixed route ridership loss in excess of 17%.

C. SALES TAX & FARE REVENUES

C-1. Comparison of Budget to Actual for the Month (February 2009)

	Dollars in Millions			
	FY2009 February Budget	FY2009 February Actuals	\$ Variance	% Variance
Fares	5.185	5.352	0.167	3.2%
Sales tax income (cash basis)	47.592	63.590	15.998	33.6%

C-2. Comparison of Budget to Actual Year-to-Date (5 Months)

	Dollars in Millions			
	FY2009 YTD Budget	FY2009 YTD Actuals	\$ Variance	% Variance
Fares	25.673	27.478	1.805	7.0%
Sales tax income (cash basis)	197.236	235.554	38.318	19.4%

C-3. Comparison of FY2008 to FY2009 for the Month (February 2009)

	Dollars in Millions			
	FY2008 February Actuals	FY2009 February Actuals	\$ Variance	% Variance
Fares	4.061	5.352	1.291	31.8%
Sales tax income (cash basis)	56.293	63.590	7.297	13.0%

C-4. Comparison of FY2008 to FY2009 Year-to-Date (5 Months)

	Dollars in Millions			
	FY2008 YTD Actuals	FY2009 YTD Actuals	\$ Variance	% Variance
Fares	20.804	27.478	6.674	32.1%
Sales tax income (cash basis)	217.988	235.554	17.566	8.1%

D. OPERATING RATIO STATISTICS

COST EFFECTIVENESS PERFORMANCE GOALS					
February 2009					
	Annual FY2008	THIS MONTH	FY2009 YTD	FY2009 GOAL	YTD % VARIANCE FROM GOAL
Operating Ratio	18%	22%	21%	19%	12%

Beginning in FY2006, a revised formula is being used to calculate the operating ratio. The revised formula more accurately states the revenues and cost relationships and is more comparable to published industry data.

$$\frac{\text{Total Fares plus Cost Recovery}}{\text{Total Transit Cost}}$$

E. SERVICE PERFORMANCE STATISTICS

SYSTEM QUALITY PERFORMANCE GOALS				
February 2009				

	THIS MONTH	FY2009 YTD	FY2009 GOAL	YTD % VARIANCE
On-Time Performance ⁽¹⁾				
Local	64%	65%	61%	6.6%
Park & Ride	76%	74%	74%	0.0%
Weighted Average	67%	67%	65%	3.1%
Mean Distance Between Mechanical Failures (All buses) ⁽²⁾	8,717	8,018	6,000	33.6%

⁽¹⁾ A local or express bus is considered on time if it does not leave early and is less than 5 minutes late. A Park & Ride bus is considered on time if it does not depart early (except in the morning when a bus can leave from a Park & Ride lot when full) and is less than 5 minutes late - measurements are for peak hours. OTP is measured by IVOMS which calculates data to the second. Beginning in FY2009, the 5 minute window is defined as anything less than 6 minutes.

⁽²⁾ Effective October 2006, MDBF Mechanical roadcalls are defined as any mechanical issue encountered during operation of the vehicle in revenue service that requires a maintenance action resulting from a mechanical failure. Mechanical failures include warranty and fleet defects but exclude accidents. This indicator is for the bus system but excludes METROLift.

	THIS MONTH	FY2009 YTD	YTD FY2009 GOAL	YTD % VARIANCE <small>(Neg=Better Than Goal)</small>
Bus Accidents - absolute number ⁽³⁾	41	190	255	-25.5%
- per 100,000 vehicle miles	0.80	0.70	0.94	
Rail Accidents - absolute number ⁽⁴⁾	1	13	18	-27.8%
- per 100,000 vehicle miles	1.39	3.18	5.40	
Complaint Calls - absolute number	1,248	7,102	9,850	-27.9%
- as a % of boardings	0.0186	0.0199	0.0243	
Major Security Incidents - total ⁽⁵⁾	28	171	250	-31.6%
- per 100,000 boardings	0.417	0.478	0.616	
Major Security Incidents - METRO properties ⁽⁶⁾	17	75	160	-53.1%
- per 100,000 boardings	0.253	0.210	0.395	

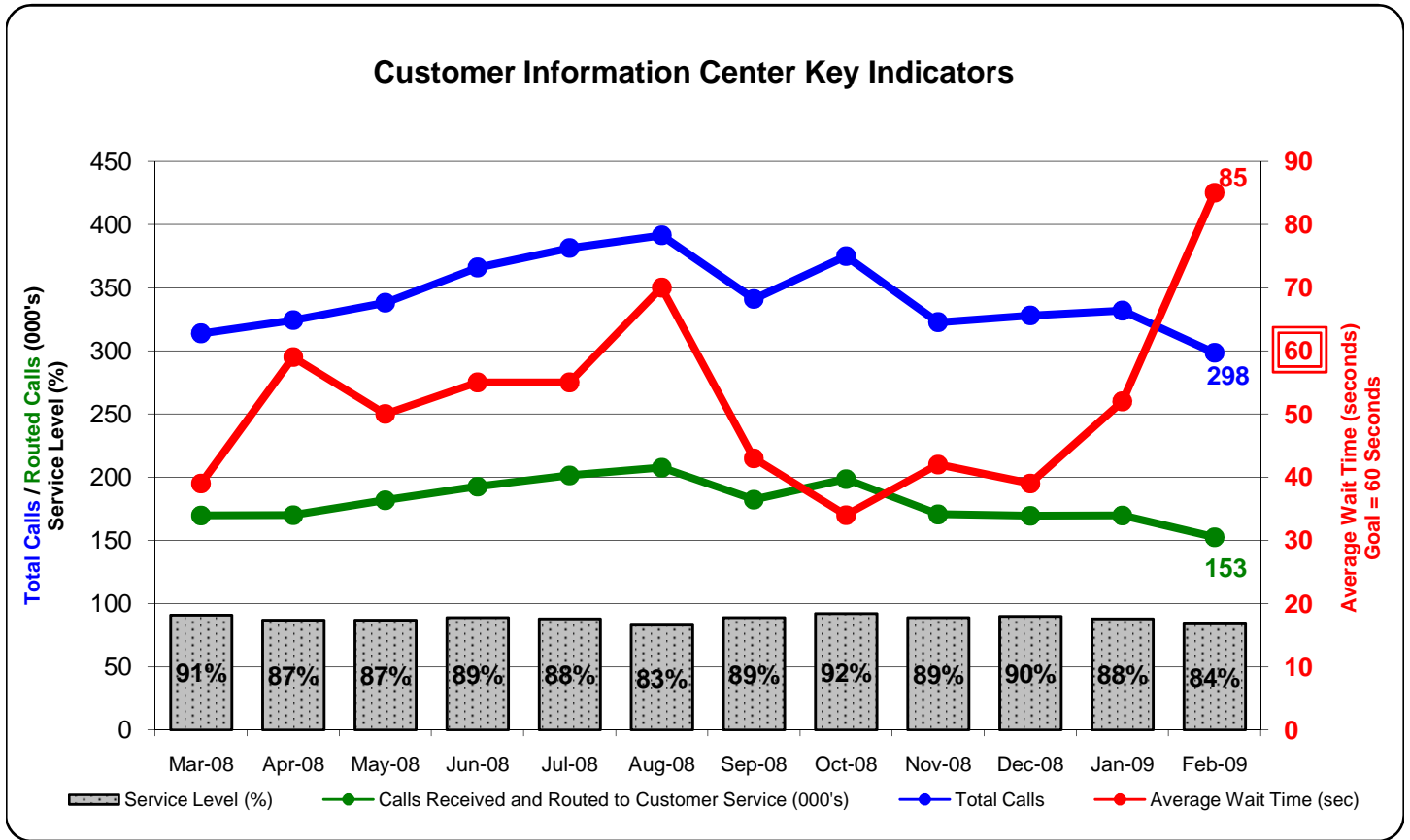
⁽³⁾ This indicator is for the bus system and includes METROLift.

⁽⁴⁾ Rail Accidents reflect collisions between METRORail and vehicles

⁽⁵⁾ Total Major Security Incidents are based on two industry standards: The FBI Uniform Crime Report and the National Transit Database Report issued by the Federal Transit Administration. The 8 categories included are: homicide, forcible rape, robbery, aggravated assault, burglary, larceny and theft, motor vehicle theft and arson.

⁽⁶⁾ Major Security Incidents at METRO controlled properties is defined as incidents that occur at park and ride lots, transit centers, on board buses & trains and on LRV platforms.

E. SERVICE PERFORMANCE STATISTICS



IVR and Web Trip Planner Implemented September 30, 2005

Total Calls includes total calls routed to agents plus total number of automated schedule lookups.

Service Level = Calls answered by Customer Information Specialists (CIS)/Calls Offered to CIS.

F. CAPITAL BUDGET

	February FY2009 Budget	February FY2009 Actuals	YTD FY2009 Budget	YTD FY2009 Actuals	YTD FY2009 Variance	
Total Capital Budget	34,851	14,134	160,738	61,489	(99,249)	-61.7%

G. GENERAL MOBILITY PROGRAM

	February FY2009 Budget	February FY2009 Actuals	YTD FY2009 Budget	YTD FY2009 Actuals	YTD FY2009 Variance	
Total General Mobility	28,659	9,184	61,079	19,720	(41,359)	-67.7%

H. DEBT SERVICE

	February FY2009 Budget	February FY2009 Actuals	YTD FY2009 Budget	YTD FY2009 Actuals	YTD FY2009 Variance	
Total Debt Service	312	35	1,869	643	(1,226)	-65.6%