

General Mobility Program

Flow of Funds

Board of Directors Meeting
Thursday – May 31, 2012

Context

- In 2003, voters extended GMP to 2014
- Contracts governing GMP allocation also extended to 2014
- Current GMP expires September 2014
- All GMP contracts expire September 2014
- Any continuation of GMP requires dealing with GMP allocation
- Flow of Funds is starting point for allocation

GMP since inception & projected

Period	Commitment (\$ millions)
Pre-FY1999	\$ 924 million
FY1999 – FY2011	1.3 billion
FY2012 – FY2014	447 million (est.)
Total Program Outflow	\$ 2.7 billion (est.)

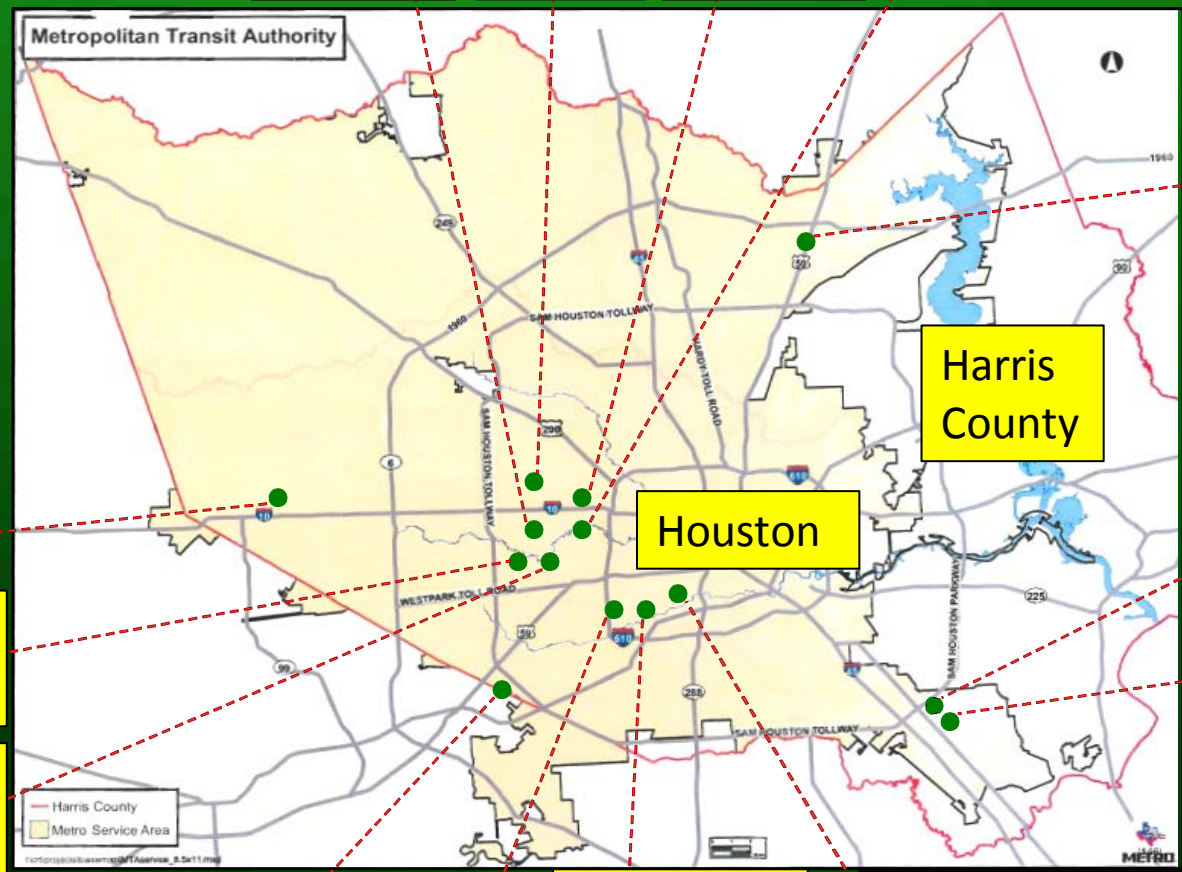
Member Entities

Hedwig Village

Spring Valley Village

Hilshire Village

Hunters Creek Village



Humble

Harris County

Houston

Taylor Lake Village

El Lago

Katy

Bunker Hill Village

Piney Point Village

Missouri City

Bellaire

Southside Place

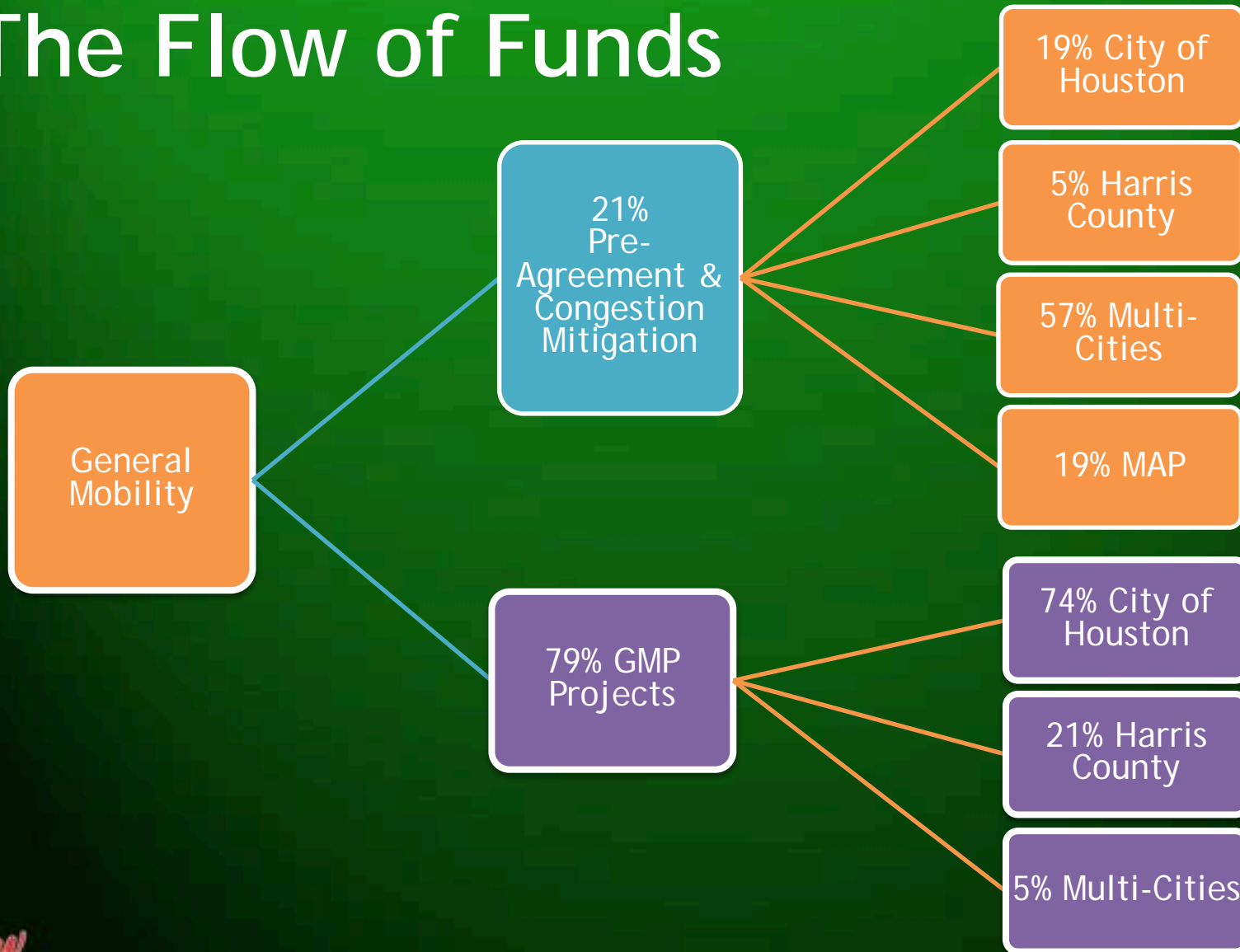
West University Place



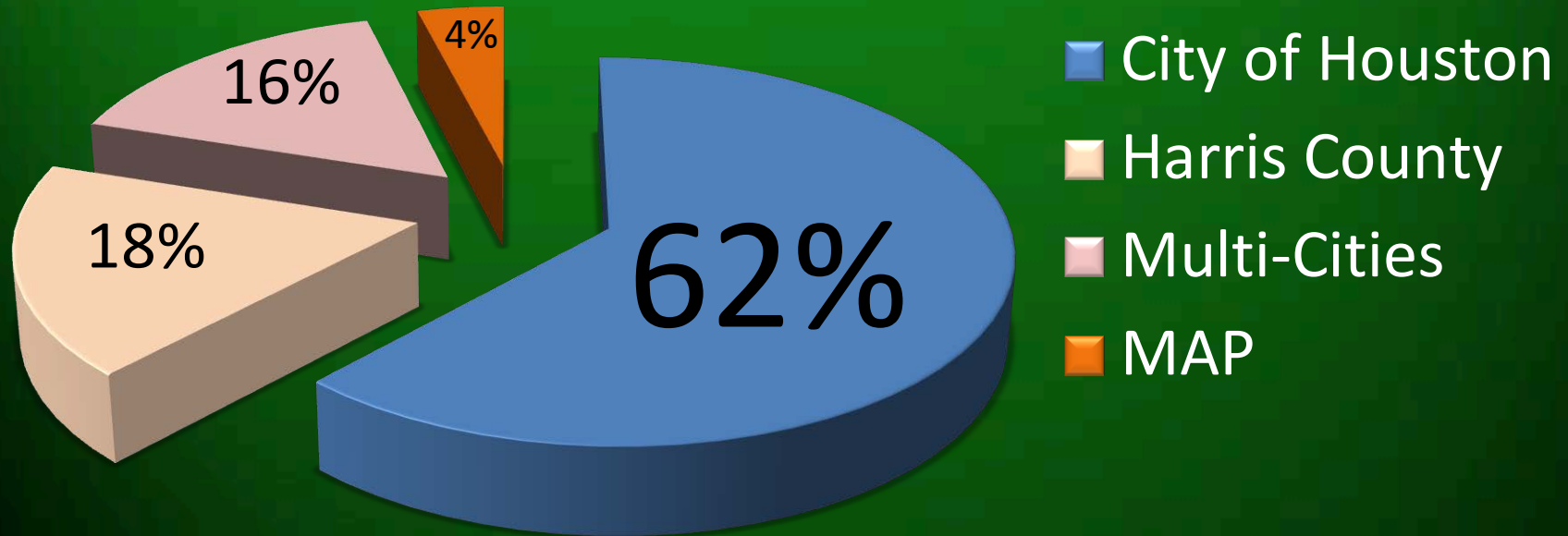
The Flow of Funds



The Flow of Funds



Distribution of General Mobility Program Payments



Comparison FY1988 - FY2014

	Total Estimated Sales Tax Collections	Total Estimated Committed to GMP	Committed per Dollar Collected
City of Houston	\$ 8.3 billion	\$1.7 billion	20¢
Harris County	\$976 million	\$546 million	55¢
Multi-Cities	\$551 million	\$359 million	65¢
MAP	N/A	\$ 82 million	N/A

Comparison FY1988 - FY2014

	Total Estimated Sales Tax Collections (\$1,000's)	Total Estimated Committed to GMP (\$1,000's)	Committed per Dollar Collected
Piney Point Village	\$ 1,429	\$ 23,571	\$ 16.49
Bunker Hill	859	12,150	14.14
Taylor Lake Village	853	10,542	12.36
Hilshire Village	942	5,649	6.00
Hunters Creek Village	5,480	15,993	2.92
El Lago	2,465	3,946	1.60
Spring Valley	14,033	19,860	1.42
Southside Place	7,444	9,960	1.34
West University Place	18,169	12,679	70¢
Hedwig Village	39,220	25,612	65¢
Bellaire	47,959	29,823	62¢

Comparison FY1988 - FY2014

	Total Estimated Sales Tax Collections (\$1,000's)	Total Estimated Committed to GMP (\$1,000's)	Committed per Dollar Collected
Missouri City	\$ 85,489	\$ 46,095	54¢
Katy	110,629	56,104	51¢
Humble	215,740	86,900	40¢

Next Steps for the General Mobility Program

- Board solicits public comments
- Board determines referendum proposal
- Board calls election
- Voters decide on proposal
- Allocation of GMP is determined